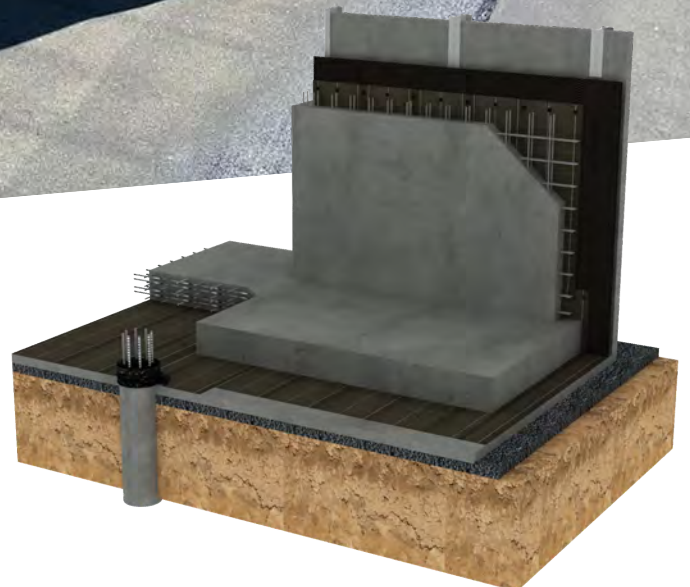
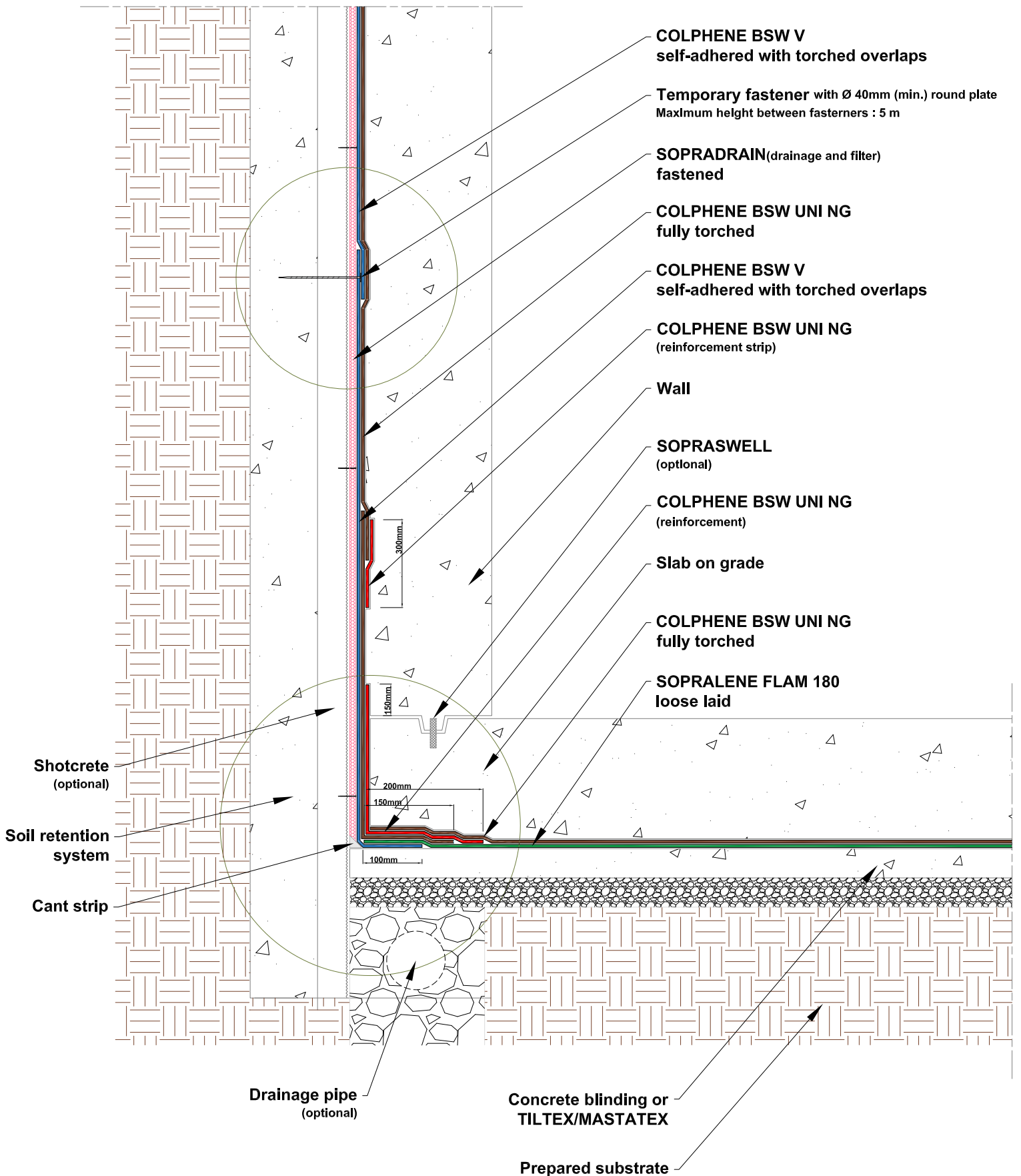


TECHNICAL DETAILS



Foundations
**DOUBLE-PLY
(PRE-APPLIED)**
soprema.com.au





COPYRIGHT 2021 SOPREMA



SOPREMA

LEVEL 35, BARANGAROO
AVENUE, SYDNEY, 2000
WWW.SOPREMA.COM.AU

TITLE: **TWO LAYERS SYSTEM PRE-APPLIED
APPLICATION DETAIL**

PROJECT:

DRAWING NUMBER:

SCALE:

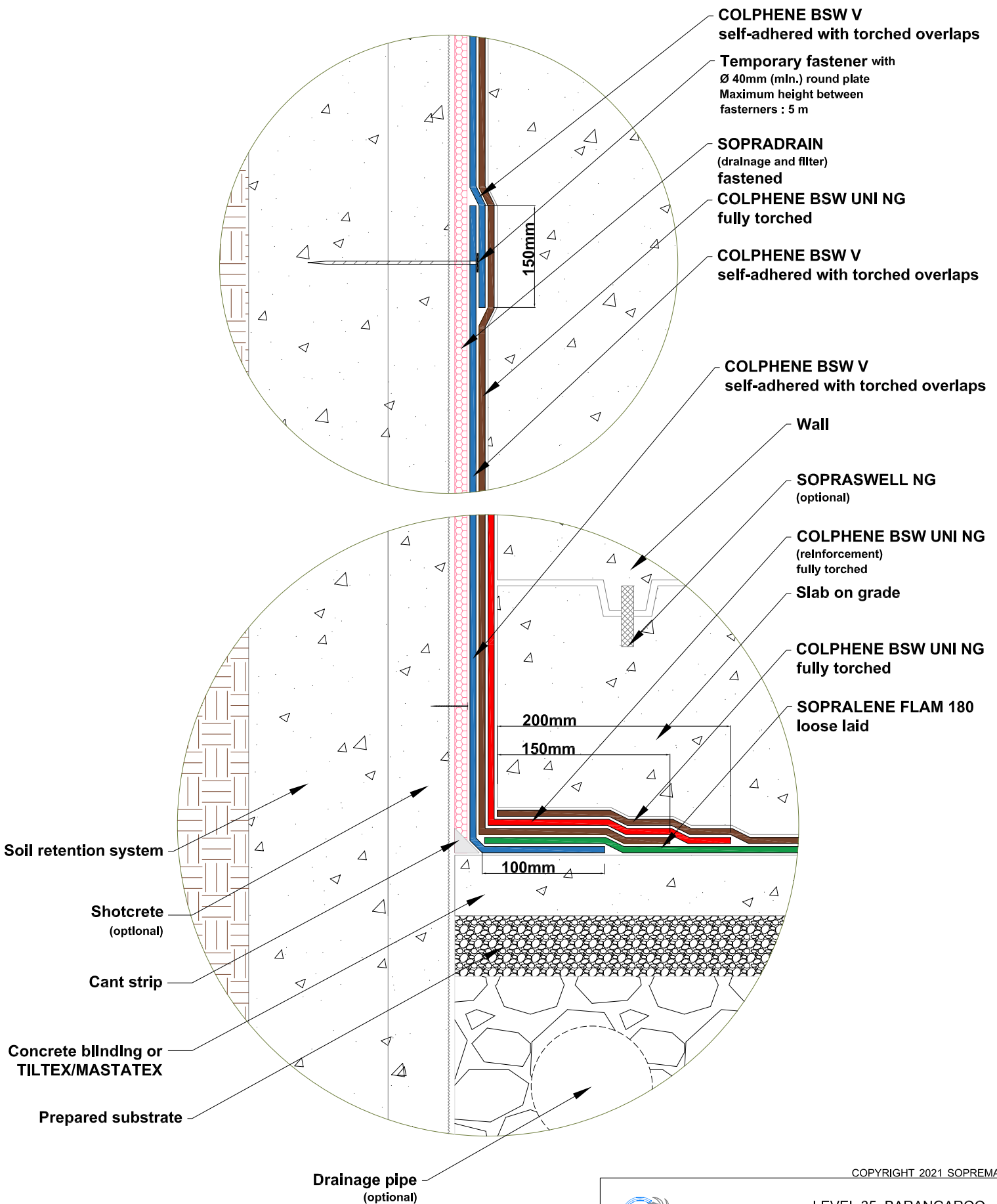
NTS

DATE:

2021

FG4

1. Detail to be used in conjunction with Soprema general requirements, application methods and approved details.
2. Usage of this drawing is governed by terms of service for Soprema detail. Please consult these terms of service prior to utilizing this drawing.



COPYRIGHT 2021 SOPREMA



SOPREMA

LEVEL 35, BARANGAROO
AVENUE, SYDNEY, 2000
WWW.SOPREMA.COM.AU

TITLE: **TWO LAYERS SYSTEM PRE-APPLIED
APPLICATION ZOOM VIEW**

PROJECT:

DRAWING NUMBER:

SCALE:

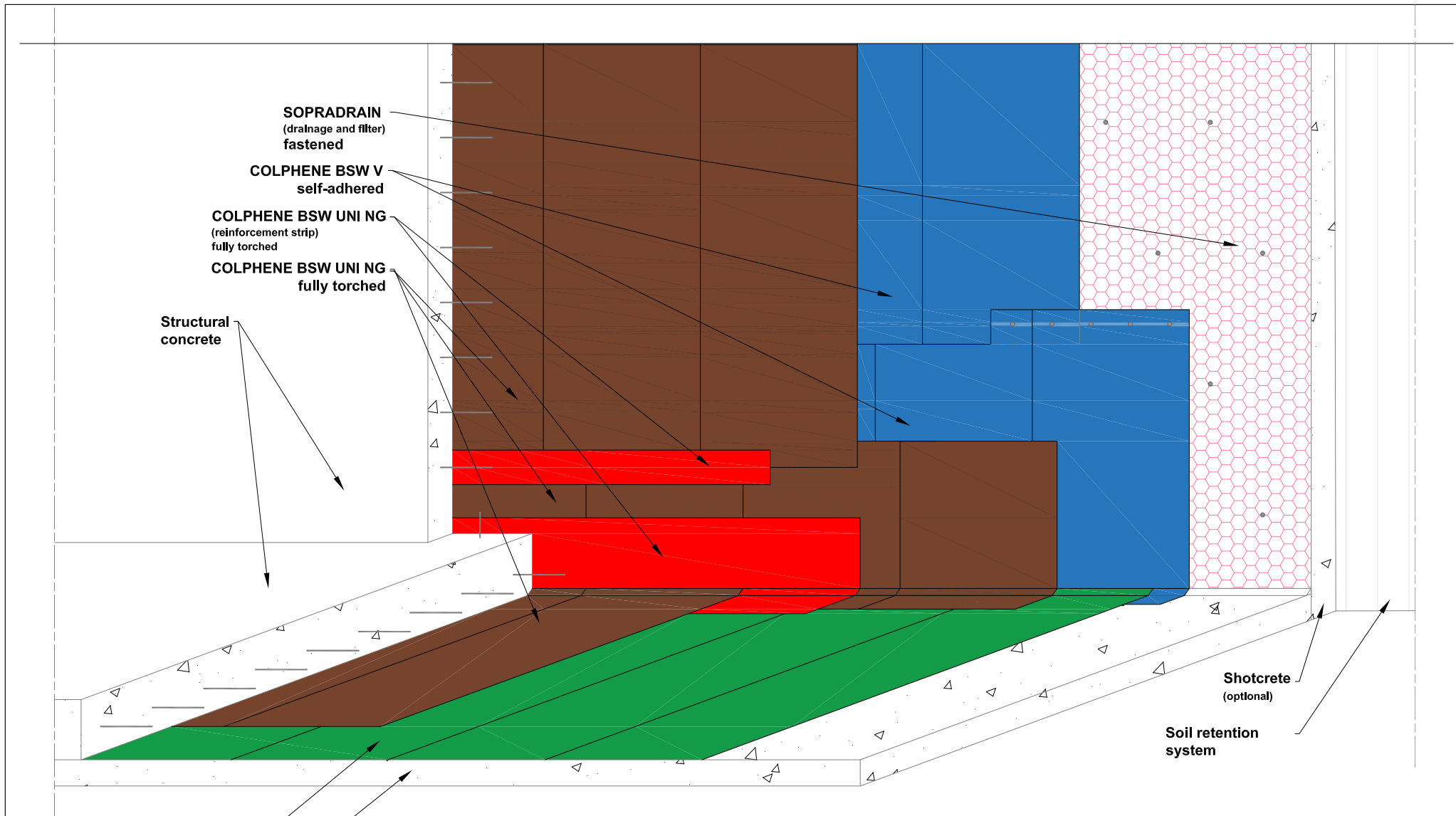
NTS

DATE:

2021

FG5

1. Detail to be used in conjunction with Soprema general requirements, application methods and approved details.
2. Usage of this drawing is governed by terms of service for Soprema detail. Please consult these terms of service prior to utilizing this drawing.



SOPRALENE FLAM 180
loose laid

Concrete blinding or
TILTEX / MASTATEX

COLPHENE BSW UNI NG

SOPRALENE FLAM 180

COLPHENE BSW V

COLPHENE BSW UNI NG
REINFORCEMENT



NOTE:

This detail is only indicative and should be verified by the designer and/or the applicator according to real job site conditions.

COPYRIGHT 2021 SOPREMA



SOPREMA

LEVEL 35, BARANGAROO
AVENUE, 2000, SYDNEY
WWW.SOPREMA.COM.AU

TITLE: TWO LAYERS SYSTEM PRE-APPLIED
APPLICATION

PROJECT:

DRAWING NUMBER:

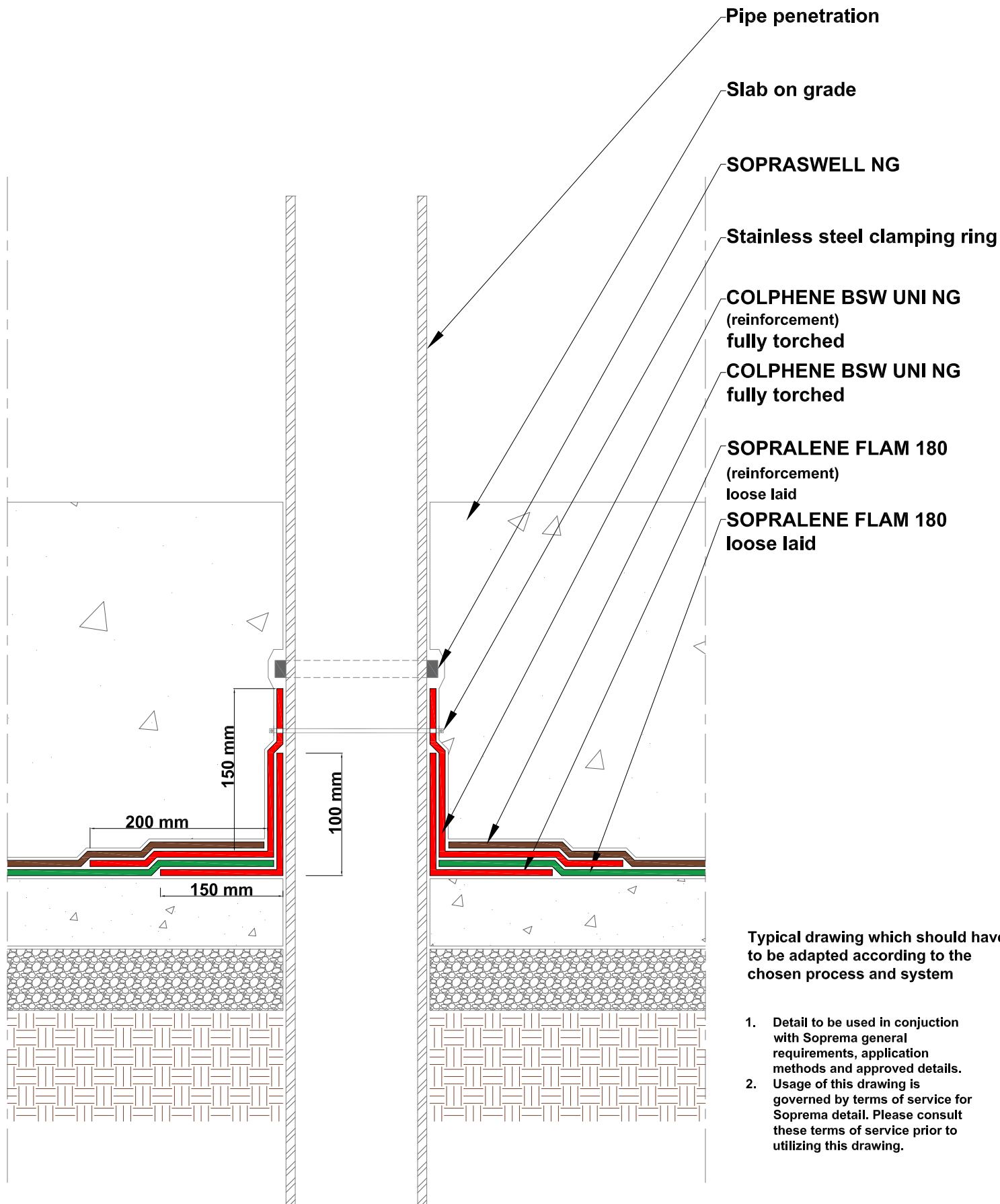
SCALE:

NTS

DATE:

2021

FG6



COPYRIGHT 2021 SOPREMA



SOPREMA

LEVEL 35, BARANGAROO
AVENUE, SYDNEY, 2000
WWW.SOPREMA.COM.AU

TITLE:

**PIPE PENETRATION DETAIL
TWO LAYERS SYSTEM**

PROJECT:

DRAWING NUMBER:

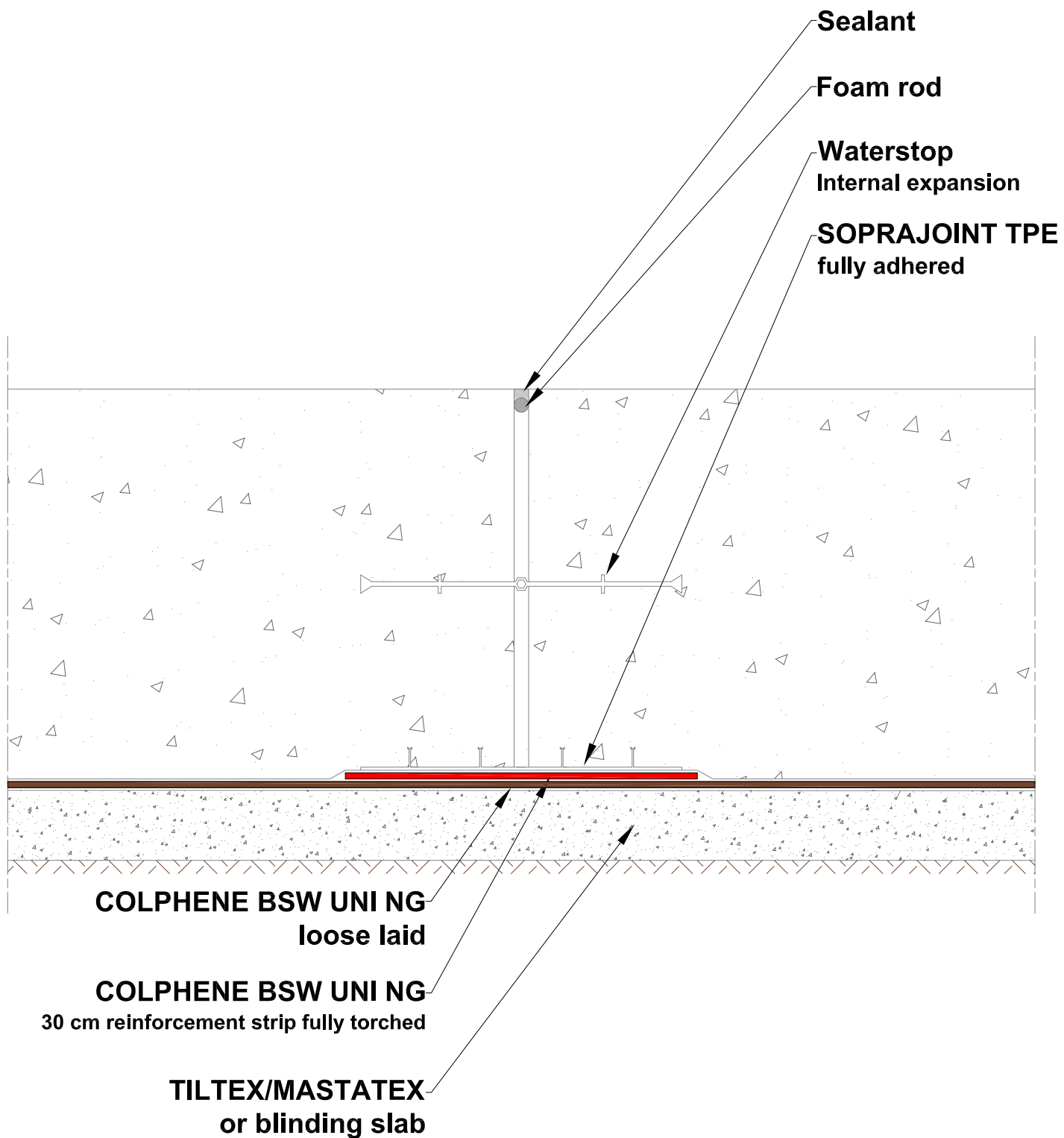
SCALE:

NTS

DATE:

2021

FG17



COPYRIGHT 2021 SOPREMA



SOPREMA

LEVEL 35, BARANGAROO
AVENUE, SYDNEY, 2000
WWW.SOPREMA.COM.AU

TITLE: **HORIZONTAL CJ DETAIL**

PROJECT:

DRAWING NUMBER:

SCALE:

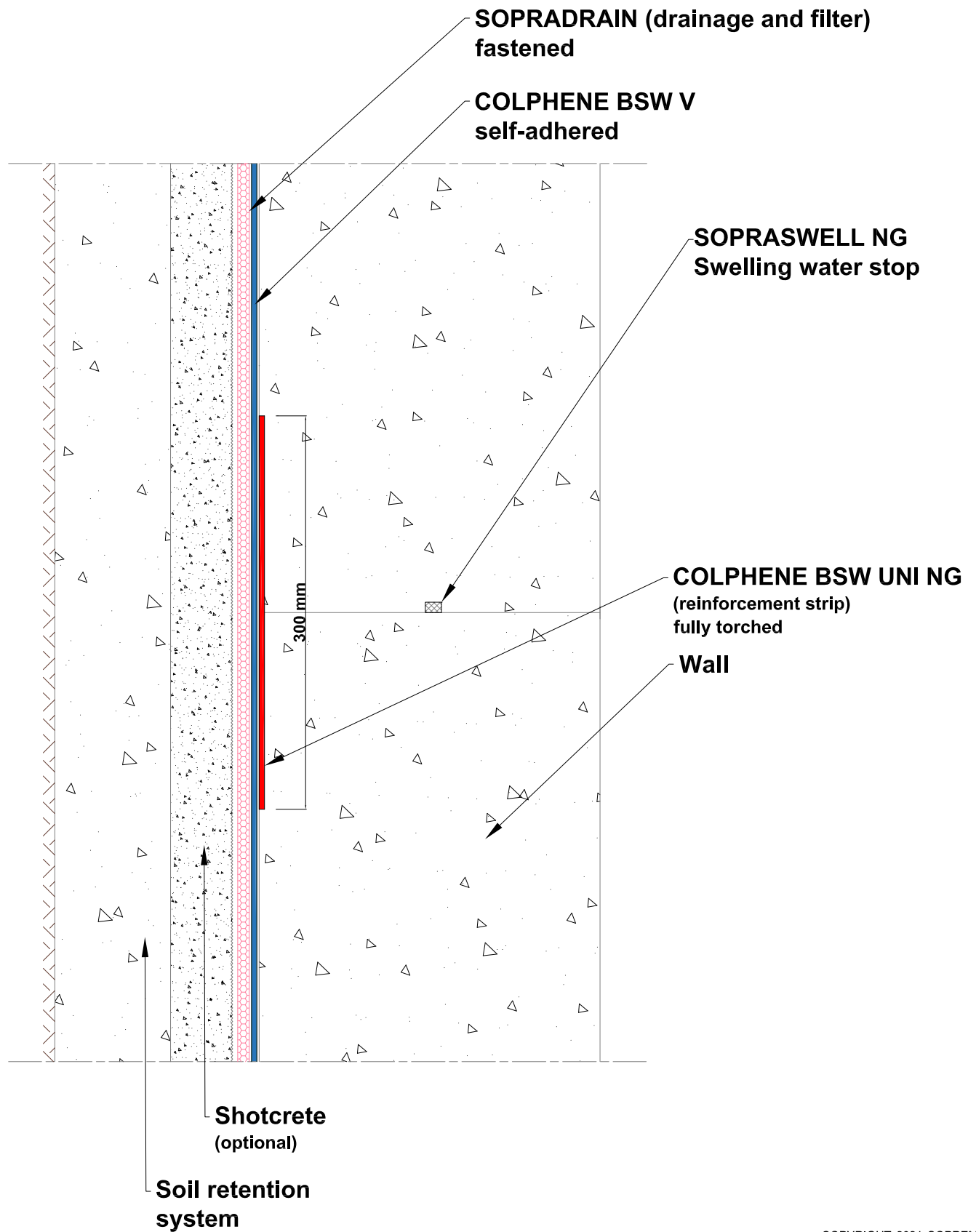
NTS

DATE:

2021

FG15

1. Detail to be used In conjunction with Soprema general requirements, application methods and approved details.
2. Usage of this drawing is governed by terms of service for Soprema detail. Please consult these terms of service prior to utilizing this drawing.



COPYRIGHT 2021 SOPREMA



SOPREMA

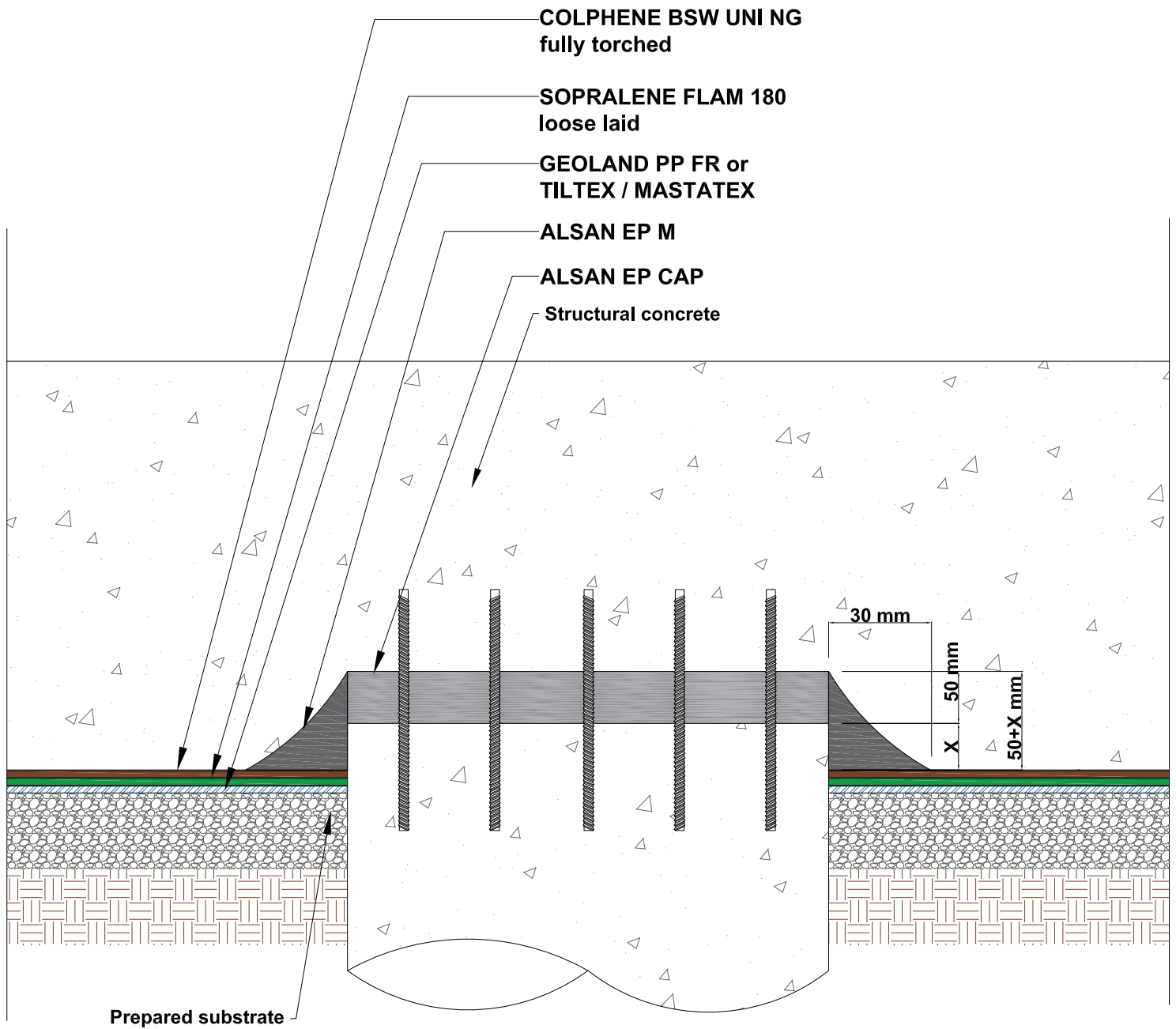
LEVEL 35, BARANGAROO
AVENUE, SYDNEY, 2000
WWW.SOPREMA.COM.AU

TITLE: VERTICAL CJ DETAIL

PROJECT: DRAWING NUMBER:

SCALE: NTS DATE: 2021 FG14

1. Detail to be used in conjunction with Soprema general requirements, application methods and approved details.
2. Usage of this drawing is governed by terms of service for Soprema detail. Please consult these terms of service prior to utilizing this drawing.



COPYRIGHT 2021 SOPREMA



SOPREMA

LEVEL 35, BARANGAROO
AVENUE, SYDNEY, 2000
WWW.SOPREMA.COM.AU

TITLE:		PILE CAP DETAIL TWO LAYERS SYSTEM	
PROJECT:		DRAWING NUMBER:	
SCALE:	NTS	DATE:	2021
		FG18	

1. Detail to be used In conjunction with Soprema general requirements, application methods and approved details.
2. Usage of this drawing is governed by terms of service for Soprema detail. Please consult these terms of service prior to utilizing this drawing.

SOPREMA's technical team will be more than happy to assist you with any queries you may have. Shall you have any questions, or need assistance with details review for your project, do not hesitate to contact us.

Richard Ajavon
Technical Manager

rajavon@soprema.com.au

